

A visual story for the
relaxed performance of

Dick Whittington

Thursday 4th January 2024 at 7:30pm
Priory Theatre, Rosemary Hill, Kenilworth, CV81BN

CONTENTS

- Page 3 - Information about The Priory Theatre
- Page 5 - Inside the auditorium
- Page 6 - Useful information on the day
- Page 8 - Characters in the show
- Page 10 - Guide to the lights, sounds and scary bits
- Page 11 - Some photos of the show

This visual story is designed for visitors to the relaxed performance of Dick Whittington. It will help prepare you if you are feeling curious or anxious about your visit.

It contains lots of images along with helpful information including:

- photographs of The Priory Theatre to help you find your way around
- descriptions for the main characters in the show
- notes on the plot and production
- some photos of the performance

We hope you enjoy the show!

Information about The Priory Theatre.

Dick Whittington is being shown at The Priory Theatre in Kenilworth.



When you arrive at the theatre, you can either use the steps at the front of the building or the accessible ramp to the right of the building.

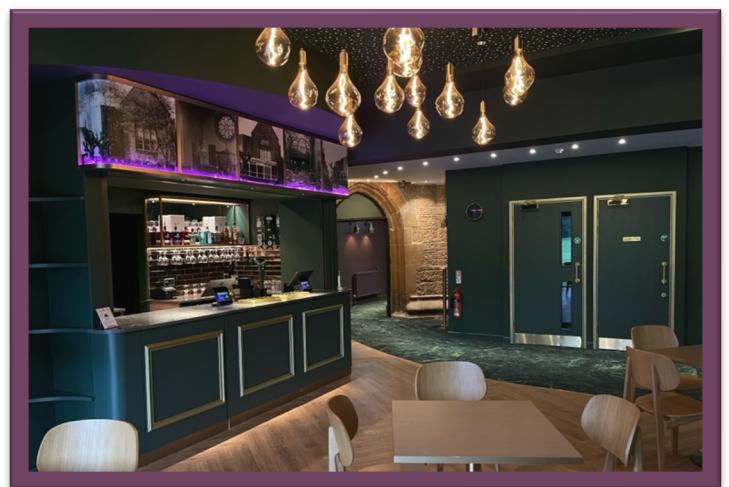
The Priory Theatre will be open from 6:45pm on the day of the relaxed performance and audience members will be able to use the theatre facilities and purchase drinks and snacks from this time onwards.

The auditorium, where you'll sit to watch the show, will open at 7pm.

There will be a pre-show touch tour from 5:30pm - 6pm which the person who booked your tickets will receive an email letting them know how to attend.

When you enter the theatre, you will go into the foyer. This is a small area where you can wait before going into the auditorium.

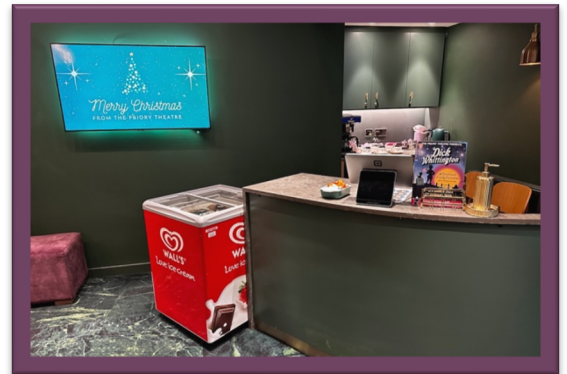
This area can be quite busy and noisy before the performance as everyone waits to go in and see the show.



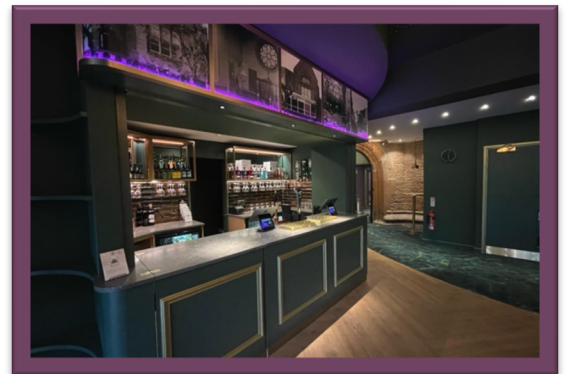
Also in the foyer is the Box Office. The Box Office is a place where you can pick up your ticket from a member of staff. If your tickets have already been sent to you in the post or by email, you probably won't need to go to the Box Office.



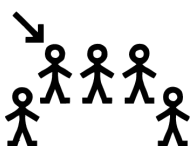
Next to the Box Office is our Hot Drinks and Ice Cream Counter where you'll be able to purchase a range of Hot Drinks and Ice Creams.



On the opposite side of the foyer is our bar. At the bar we serve a range of drinks and snacks.



If you need any help or have any questions, there are plenty of staff members who can help you.



Inside the Auditorium

The auditorium is the part of the theatre where the audience sit when they are watching the performance.

There are two different levels in the auditorium. You may be sitting very close to the stage or you may be quite high up looking down on the stage. **You will have some time before the show starts to find your seats and get comfortable.**

The stage is the area where the actors perform.



If you are sitting in the stalls (the seats on the ground floor) please be aware that the actors may move up and down the aisle throughout the performance.

Mobile phones and tablet devices are permitted inside the auditorium; however, no photography is allowed during the performance.

Would you like a familiarisation visit?

If you want to visit the theatre and see your seat before the performance, you can arrange a visit. To organise this please email access@priorytheatre.co.uk

What to say in your email..

Subject line: Relaxed performance familiarisation visit

Message: I'd like to visit the theatre at (pick a time) on (pick a date) to familiarise myself before the relaxed performance. Please could you confirm whether this date is available.

Useful information on the day

Overview

- You can leave the auditorium at any time
- It's okay to talk during the performance
- You are welcome to wear ear defenders during the performance
- You are allowed phones and tablet devices in the auditorium but no photography is to be taken during the performance.

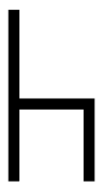
Chill-out areas

If you want to leave the auditorium at any time during the performance, there are two chill-out areas that you can visit.

The first area is in the foyer, where you waited when you first arrived at the theatre.

The second is upstairs in the circle area of the auditorium. This space is perfect if you want to carry on watching the show but would prefer a bit more space or to be further away from the stage.

You can go to either of these areas to relax if you need a little break. If you need to, you can ask any of the staff members where the chill-out areas are and they will show you the way.



Performance Times

The performance is shown in two parts with a 20 minute break in the middle (called the 'interval'). The first part is about 1 hour long and the second part is about 45 minutes long.

Show Changes

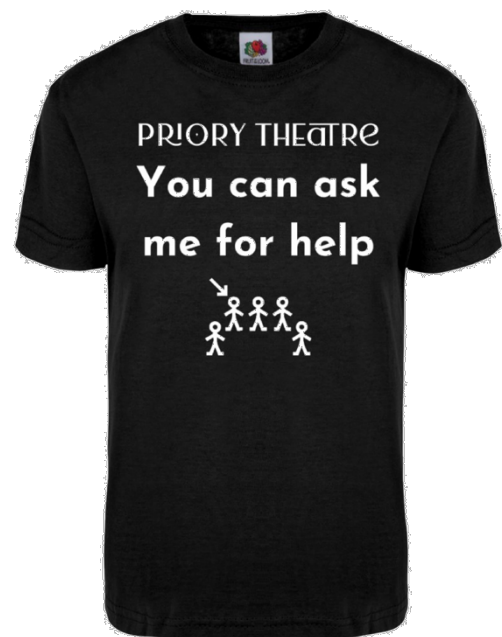
For this relaxed performance the sound and lighting and some other small aspects of the show have been altered in order to reduce anxiety and to provide a less stressful experience. Also, if you need to talk during the show or to take a break, that's fine, just ask an usher to show you the way to a chill-out area.

What is the show about?

Dick Whittington is a pantomime, which is a silly type of show with lots of jokes and songs. The show tells the story of a man called Dick Whittington who travels from Gloucester to London in order to seek his fortune. Along the way he meets lots of new friends, but also has to attempt to defeat the wicked Queen Rat.

People who can help

All of our staff members who you can ask for help will be wearing one of these t-shirts. If you have a question, need directions or any reassurance then they'll be happy to help you.



Characters in the show

Below are pictures of the different actors and the name of the characters they play. The actors might change the way that they talk and move to show off their character. The actors also wear costumes (a costume is the name for clothes that actors wear on stage).



Dick Whittington
Dick is the hero in the story. He is best friends with Tommy the Cat.



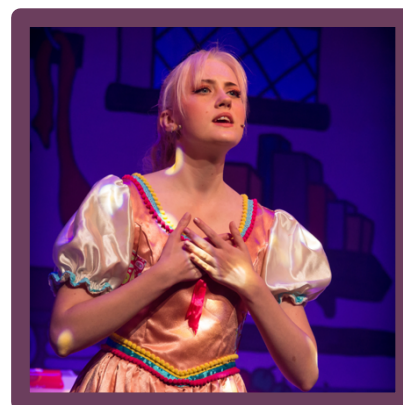
Tommy the Cat
Tommy belongs to Dick. He loves spending time with Dick and scaring away rats.



Jack
Jack is the silliest character in the show. He enjoys telling lots of jokes!



Flossie Fitzwarren
Flossie is the owner of the shop in the story. She is very loud and funny!



Alice Fitzwarren
Alice is Flossie's daughter. She is incredibly kind and falls in love with Dick.



Fairy

The fairy is the good character. She spends the whole show looking after everyone.

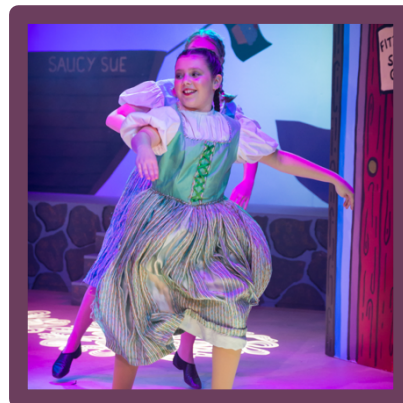
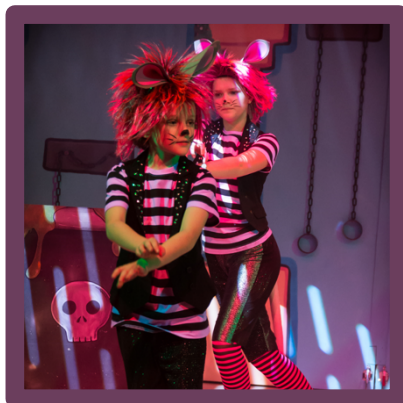


Queen Rat

Queen Rat is very mean and selfish. She doesn't want Dick to succeed in finding his riches.

Children in the show

There are different 'teams' of actors in the show who play the characters who are villagers and rats. As these actors are children themselves, they cannot act on stage every night and we don't know until shortly before the show who will be performing. That means that when you come to see the pantomime the actors playing the characters might be different than the pictures below, but they will be wearing the same costumes.



Guide to the lights, sounds and scary bits

- There are lots of sound effects in the show and, while we have reduced the noise level throughout the show, there are still moments when the sound is quite loud. If you are particularly sensitive to sound **you are very welcome to wear ear defenders** during the performance, if you have brought them with you.
- Dick Whittington is a story about a man called Dick who travels from Gloucester to London to seek his riches. Along the way he gets sad and upset when his new friends don't believe him and think he is lying. You might find this bit upsetting too.
- There is a mean character called Queen Rat who appears throughout the show. Queen Rat doesn't like Dick and his new friends and does everything she can to scare them and stop them becoming happy. Queen Rat can be quite scary.
- At several points throughout the show, the rat characters come onto stage and appear to attack Dick and his friends. Tommy the cat scares them off. There are lots of lighting and sound effects used during this. This is all rehearsed and the cast are safe.
- Jack is a silly character and falls over during the show. The actor playing Jack has rehearsed lots and is always safe.
- There are balloons used towards the end of the second part of the show but they are not deliberately popped at any point.
- In one scene some ropes are hung from the roof of the stage and they fall during a storm. This is supposed to happen and is rehearsed to make sure everyone is safe.

- There are swords used in several parts of the show. These swords are blunt, made of plastic and the cast rehearse lots with them. No one is ever in any danger.
- There is one point where a character called 'headless hook' comes onto stage and appears to be missing their head. This is a costume and the actor playing the character is safe.
- During the second part of the show, Queen Rat captures Dick and his friends and ties them up in her palace. The chains she uses are pretend and the cast are never in any real danger.
- Towards the end of the show, Dick battles Queen Rat in a sword fight and Queen Rat falls into a caldron at the back of the stage. The caldron is not real and the actor playing Queen Rat is always safe.

